

LEAF PENDANT



As its name suggests, the shape of this pendant was influenced by palm leaves. The unique form gives a different impression from every viewing angle. The aim of this characteristic appearance is to make the luminaire a compelling and prominent element of the room by itself. This effect gets emphasized by the ever-changing shades of glitter of the coloured aluminium poles depending on light condition.

Available in two sizes:

Leaf 97

Leaf 72

Designed by:

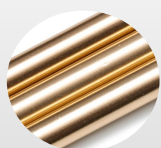
Daniel Mato



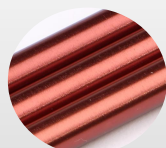
**A'DESIGN AWARD
WINNER 2019
PLATINUM**

Finishes

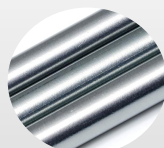
Metal



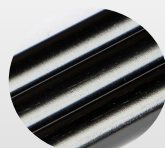
Pearl



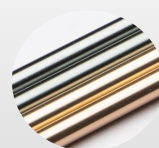
Bordeaux



Cloud



Black



Pearl-Cloud

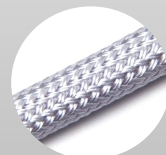


Bordeaux-Cloud

Fabric wire



Black



Silver

Ceiling cover



Black



White

Details

LEAF 97

Product code: LF00397

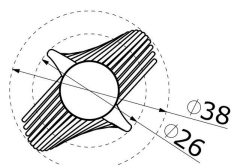
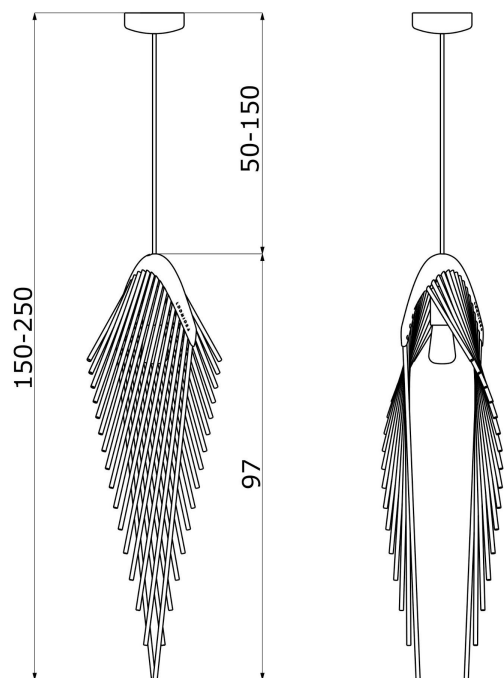
Materials:

Aluminium poles, 3D printed polyamide

Measurements:

Height: 97cm Diameter: 38/26cm

Fabric wire length: 50-150cm



LEAF 97

[cm]

Net weight: 2.4kg

Packaging:

Cardboard box, (L/W/H): 106/45/32 cm

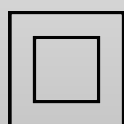
Gross weight: 5 kg

Light source (included):

1xE27 Edison vintage LED bulb 7.5W, 750lm

Colour temperature: 2200-2500K (other temperature may be available on request)

Decorative lighting



Class II /
Double insulated



220-240V
~50/60Hz

LEAF 72

Product code: LF00372

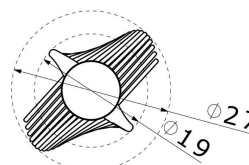
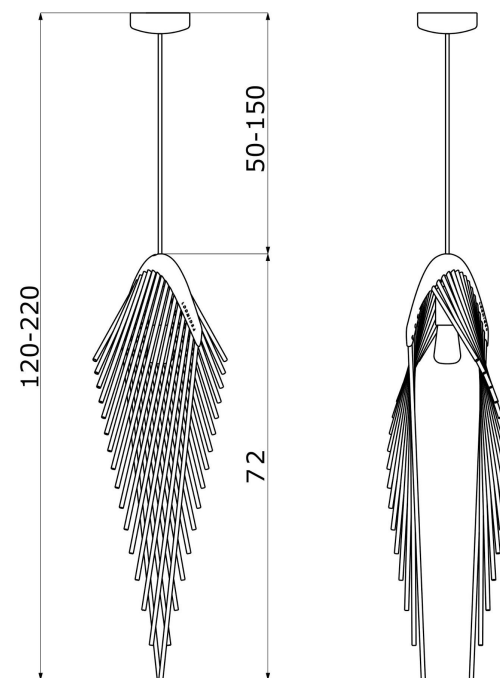
Materials:

Aluminium poles, 3D printed polyamide

Measurements:

Height: 72cm Diameter: 27/19cm

Fabric wire length: 50-150cm



LEAF 72

[cm]

Net weight: 1.8kg

Packaging:

Cardboard box, (L/W/H): 81/33/24 cm

Gross weight: 3.5 kg

Light source (included):

1xE27 Edison vintage LED bulb 4W, 400lm

Colour temperature: 2200-2500K (other temperature may be available on request)

Decorative lighting



Indoor use



CE-Mark